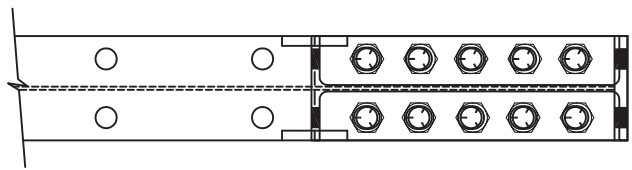




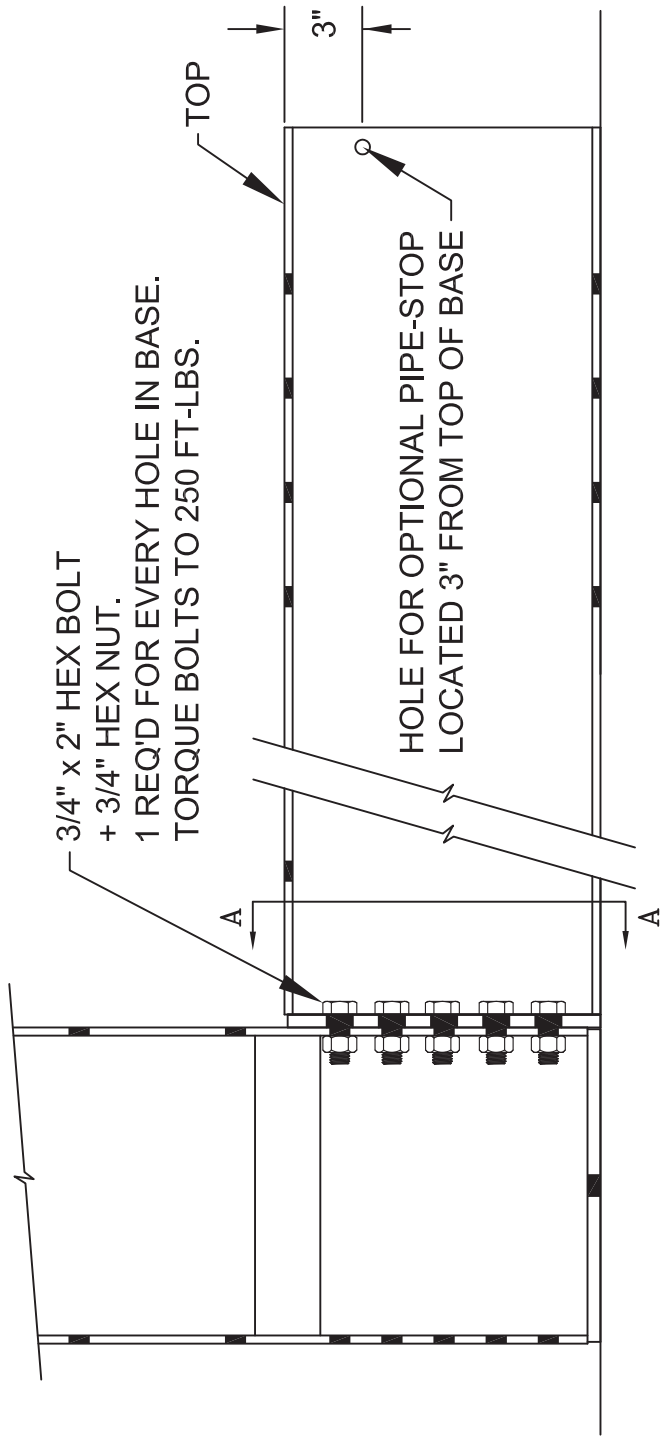
ASSEMBLY INSTRUCTIONS: CANTILEVER RACK

1. Rack should only be installed by qualified, trained personnel who are experienced in storage rack assembly. Installation crews should always be familiar with safety regulations and use necessary safety equipment. Always adhere to the concrete anchor manufacturer's installation instructions for slab drilling, hole cleaning and anchor installation.
2. Read instructions and review diagrams in their entirety before beginning assembly.
3. Inspect all materials for damage immediately upon receipt. Notify the Project Manager if any product is damaged.
4. Check and inventory the materials, referencing the packing list. Notify the Project Manager if any product is missing.
5. Make sure all material bundles are tagged with part numbers. Each bundle will have a unique tag indicating its part number. If project-specific installation drawings are provided, cross reference the bill of materials on the drawings, and match the "balloon numbers" to the component part numbers. Identify each bundle with respect to the balloon number on the installation drawing.
6. Lay out the rack footprint on the floor. Snap a down-aisle chalk line defining the main aisle, and snap cross-aisle chalk lines defining the edge of each cantilever base line.
7. Assemble a starter bay on the floor, consisting of two columns, the required bases, and the required arms. **Note that typical hardware requirements are illustrated in the attached diagrams.**
8. Erect the assembled starter bay, plumbing the columns, and shimming the columns and bases if necessary. Install brace panels and horizontal braces. Tighten all hardware on arms, brace panels and horizontal braces.
9. Square and anchor the starter bay.
10. Complete remainder of row by adding columns, brace panels and horizontal braces. Repeat positioning, shimming and plumbing before tightening bolts.

WARNING: PROPER INSTALLATION IS THE RESPONSIBILITY OF THE PURCHASER AND IS NOT COVERED UNDER ANY WARRANTY BY SPACERAK. IT IS IMPORTANT THAT THE INSTALLER DOES NOT SUBSTITUTE ANY PARTS OR HARDWARE. SPACERAK COMPONENT PARTS ARE NOT TO BE COMBINED WITH PARTS FROM ANY OTHER MANUFACTURER.



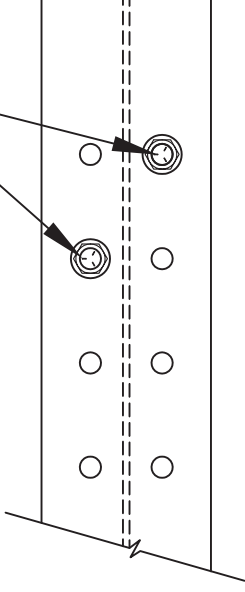
SECTION A-A



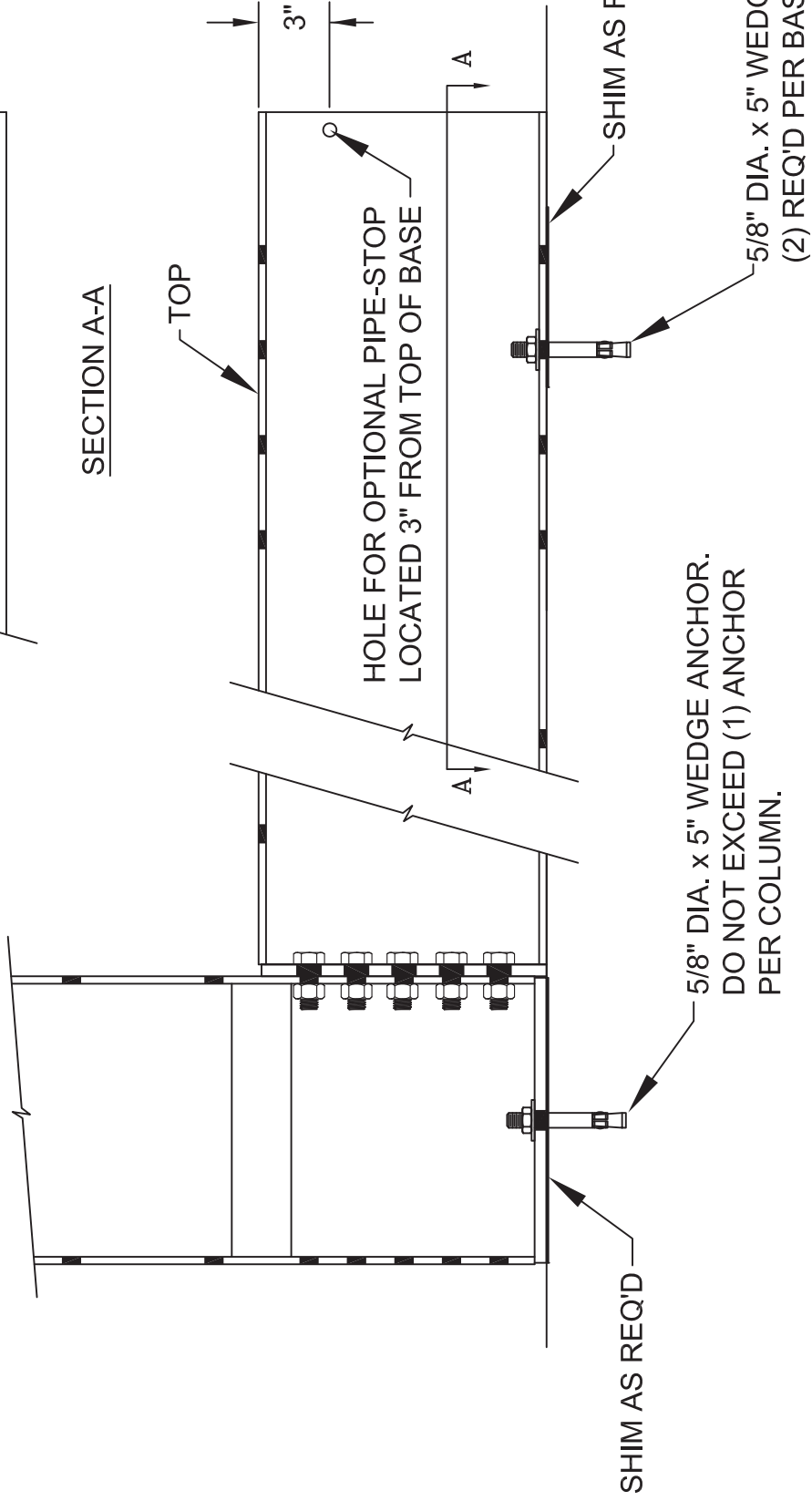
3/4" x 2" HEX BOLT
+ 3/4" HEX NUT.
1 REQ'D FOR EVERY HOLE IN BASE.
TORQUE BOLTS TO 250 FT-LBS.

HOLE FOR OPTIONAL PIPE-STOP
LOCATED 3" FROM TOP OF BASE

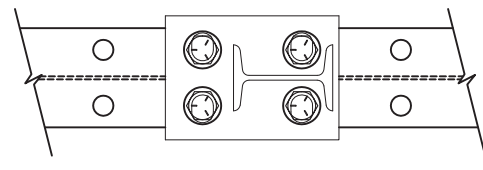
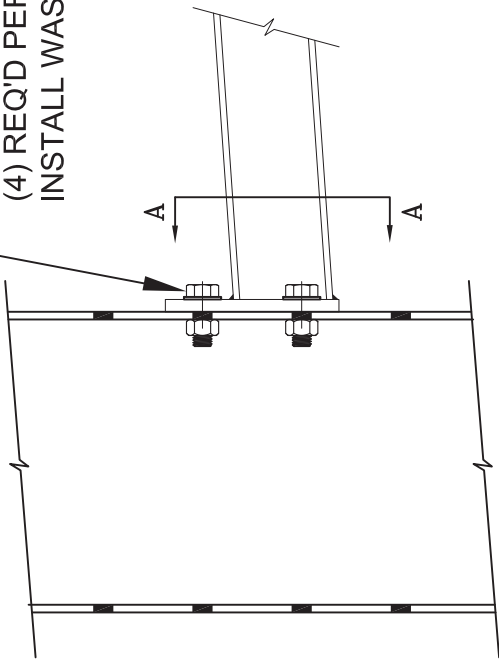
STAGGER ANCHORS
IN BASE



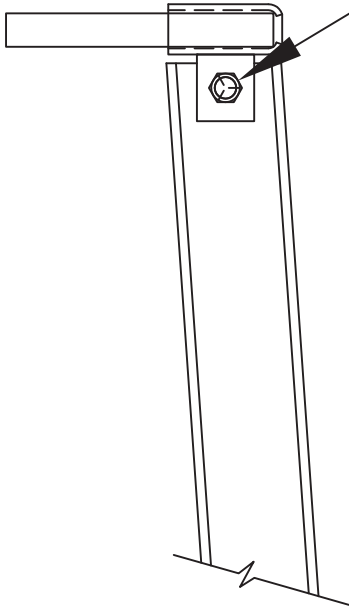
SECTION A-A



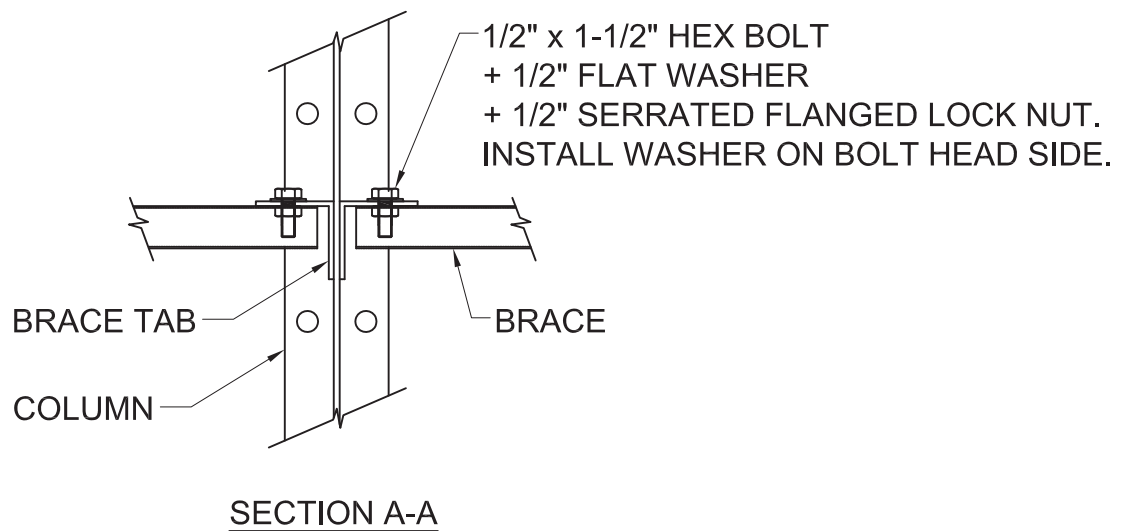
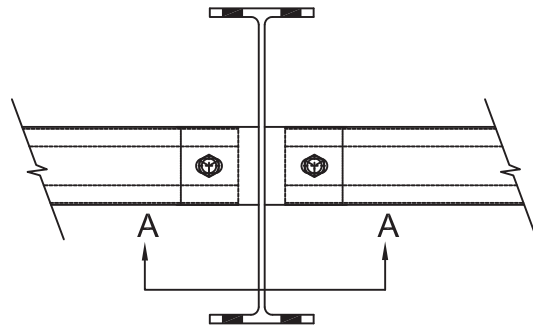
3/4" x 2" HEX BOLT + 3/4" FLAT WASHER + 3/4" HEX NUT.
(4) REQ'D PER ARM. TORQUE BOLTS TO 250 FT-LBS.
INSTALL WASHER ON BOLT HEAD SIDE.

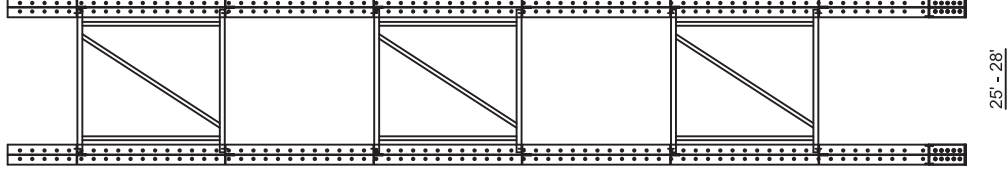


SECTION A-A

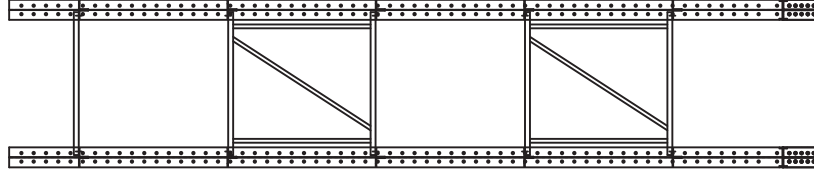


FASTEN PIPE STOP POCKET TO ARM WITH
1/2" x 1-1/2" HEX BOLT + 1/2" FLAT WASHER
+ 1/2" LOCK WASHER + 1/2" HEX NUT

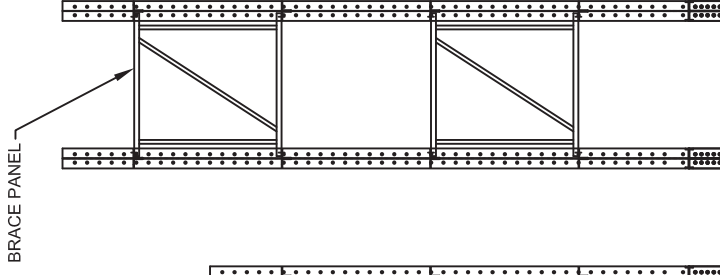




25' - 28'

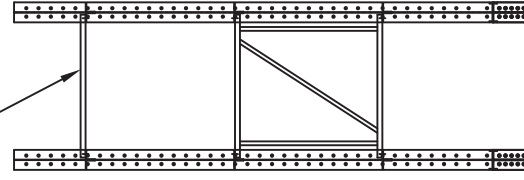


21' - 24'



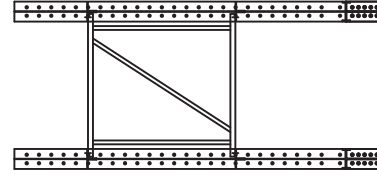
17' - 20'

BRACE PANEL



12' - 16'

HORIZONTAL BRACE



6' - 11'

COLUMN HEIGHT: